

*United Tire*

# Drive United

[WWW.UNITEDTIRE-INC.COM](http://WWW.UNITEDTIRE-INC.COM)





# Table of Contents

Introduction..... 03

 **ATLANDER**

**Atlander Tire-PCR..... 04**

All Terrain

Mud Terrain

Rugged Terrain

High Performance

Ultra High Performance

Highway Terrain

 **GOODTRIP**

GoodTrip Tire-PCR..... 16

Eco Tire

High Performance Sedan

High Performance SUV

 **ATLANDER**

Atlander Tire-TBR..... 25

**United Tire**

# Introduction

**United Tire Inc. (UTI):** Driving Performance Forward

Founded in California, United Tire Inc. (UTI) is committed to delivering durable, high-performance tires for the U.S. market. With established warehouses, offices, and a dedicated service team, UTI ensures quality and reliability for both passenger and commercial vehicles.

UTI supplies ATLANDER and GOODTRIP PCR tires for safety and longevity, as well as ATLANDER TBR tires built for heavy-duty performance. Driven by innovation and customer trust, UTI goes beyond selling tires—it provides dependable solutions for every journey. With a focus on excellence, UTI is not just keeping up but leading the way in the tire industry.



Premium

 **ATLANDER**



AX-77 AX-88 AX-99 XSPORT-76 XSPORT-86



ROVERSTAR H/T ROVERCLAW A/T ROVERCLAW M/T I ROVERCLAW M/T II ROVERCLAW R/T VANPlus C18



ATL-210 ATL-430 ATL-220 ATL-858 ATL-377



ATL-410 ATL-876 ATL-868 ATL-310 ATL-230

And More

PCR

TBR

 **GOODTRIP**



GP-16 GP-66 GX-01



GS-07 H/T GS-37 A/T GS-67 M/T GS-57 R/T

Effective

More TBR effective products coming soon



# Atlander PCR

Where luxury meets performance—exceptional grip, unmatched comfort, and quiet rides for every journey.

ATLANDER TIRE CO., LTD produces high-performance, eco-friendly radial tires in Thailand, with an annual capacity of 10 million tires. Our Industry-4.0 factories use advanced technology for superior quality. We offer a wide range of PCR, SUV, and UHP sizes to enhance your business. Committed to strong partnerships, our mission is to be the most connected and insightful automotive solutions provider.







# ROVERCLAW R/T

## Rugged Terrain

Wheel Diameter	SIZE	Index	PR	UTQG	Tread Depth (mm)	Rim	Width (mm)	OA.diameter (mm)	Max Loading Capacity	Max Permissive Pressure
17	33X12.50R17LT	120Q	10PR	-	13.5	10J	318	832	1400	450
	35X12.50R17LT	121Q	10PR	-	13.5	10J	318	883	1450	450
	LT305/65R17	121/118S	10PR							
	LT315/70R17	121/118S	10PR							
18	33x12.50R18LT	118Q	10PR	-	13.5	10J	318	832	1320	450
	35x12.50R18LT	123Q	10PR	-	13.5	10J	318	883	1550	450
	LT305/60R18	121/118S	10PR							
	LT325/65R18	127/124S	10PR							
20	LT285/55R20	122/119Q	10PR	-	13.5	9J	297	822	1500	550
	33X12.50R20LT	114Q	10PR	-	13.5	10J	318	832	1180	450
	35x12.50R20LT	121Q	10PR	-	13.5	10J	318	883	1450	450
	LT275/55R20	120/117S	10PR							
22	33x12.50R22LT	109Q	10PR	-	13.5	10J	318	832	1030	450
	35x12.50R22LT	117Q	10PR	-	13.5	10J	318	883	1285	450



# ROVERCLAW H/T

## Highway Terrain

Wheel Diameter	SIZE	Index	PR	UTQG	Tread Depth (mm)	Rim	Width (mm)	OA.diameter (mm)	Max Loading Capacity	Max Permissive Pressure
16	LT225/75R16	115/112	10	—	10	6J	223	750	1215	550
	LT245/75R16	120/116	10	—	10	7J	248	780	1380	550
	LT235/85R16	120/116	10	—	10	6½J	235	812	1380	550
	LT265/75R16	123/120	10	—	10	7½J	267	810	1550	550
17	LT245/75R17	121/118	10	—	10	7J	248	806	1450	550
	LT265/70R17	121/118	10	—	10	8J	272	810	1450	550
18	235/65R18	110H XL	—	480 A A	8.5	7J	240	763	1060	340
	245/60R18	105H	—	480 A A	8.5	7J	248	751	925	300
	265/70R18	116H	—	480 A A	8.5	8J	272	829	1250	300
	265/65R18	114H	—	480 A A	8.5	8J	272	801	1180	300
	LT275/70R18	125/122	10	—	10	8J	279	849	1650	550

# XSPORT-76

## High Performance

Wheel Diameter	SIZE	Index	PR	UTQG	Tread Depth (mm)	Rim	Width (mm)	OA.diameter (mm)	Max Loading Capacity	Max Permissive Pressure
13	165/65R13	77T		400 A A	6.8	5J	170	544	412	300
	165/70R13	79T		400 A A	6.8	5J	170	562	437	300
	175/70R13	82T		400 A A	6.8	5J	177	576	475	300
	155/80R13	79T								
	165/80R13									
14	175/65R14	82T		400 A A	6.8	5J	177	584	475	300
	175/70R14	84T		400 A A	6.8	5J	177	602	500	300
	185/60R14	82H		400 A A	6.8	5½J	189	578	475	300
	185/65R14	86H		400 A A	6.8	5½J	189	596	530	300
	185/70R14	88T	9	400 A A	6.8	5½J	189	616	560	300
	195/70R14	91T		400 A A	6.8	6J	201	630	615	300
	165/60R14									
165/65R14										
15	185/65R15	88H		560 A A	7.6	5½J	189	621	560	300
	195/65R15	91H		560 A A	7.6	6J	201	635	615	300
	175/50R15									
	175/55R15									
	225/70R15	100T								
16	185/55R16	83V								
	215/65R16	98H								



# AX-77

## High Performance

Wheel Diameter	SIZE	Index	PR	UTQG	Tread Depth (mm)	Rim	Width (mm)	OA.diameter (mm)	Max Loading Capacity	Max Permissive Pressure
15	175/65R15	84H	560	A A	7.6	5J	177	609	500	300
	185/55R15	82V	560	A A	7.6	6J	194	585	475	300
	185/60R15	88H	560	A A	7.6	5½J	189	603	560	340
	185/65R15	88H	560	A A	7.6	5½J	189	621	560	300
	195/50R15	82V	560	A A	7.6	6J	201	577	475	300
	195/55R15	85V	560	A A	7.6	6J	201	595	515	300
	195/60R15	88V	560	A A	7.6	6J	201	615	560	300
	195/65R15	91V	560	A A	7.6	6J	201	635	615	300
	205/60R15	91V	560	A A	7.6	6J	209	627	615	300
	205/65R15	94H	560	A A	8	6J	209	647	670	300
	205/70R15	96H	560	A A	8	6J	209	669	710	300
	215/65R15	100H	560	A A	8	6½J	221	661	800	340
	215/70R15	98T	560	A A	8	6½J	221	683	750	300
	225/70R15	96H								



# XSPORT-86

## Ultra High Performance SUV

Wheel Diameter	SIZE	Index	PR	UTQG	Tread Depth (mm)	Rim	Width (mm)	OA.diameter (mm)	Max Loading Capacity	Max Permissive Pressure
16	195/50R16	84V		420 A A	7.6	6J	201	602	500	300
	195/55R16	87V		420 A A	7.6	6J	201	620	545	300
	205/45R16	87W		420 A A	7.6	7J	206	590	545	340
	205/50R16	87V		420 A A	7.6	6½J	214	612	545	300
	205/55R16	91V		420 A A	7.6	6½J	214	632	615	300
	205/55ZR16	91W		420 A A	7.6	6½J	214	632	615	300
	205/60R16	92V		420 A A	7.6	6J	209	652	630	300
	205/65R16	95V		420 A A	7.6	6J	209	672	690	300
	215/55R16	97W		420 A A	7.6	7J	226	642	730	340
	215/60R16	95V		420 A A	7.6	6½J	221	664	690	300
	225/50R16	92W		420 A A	7.6	7J	233	632	630	300
	225/55R16	99W		420 A A	7.6	7J	233	654	775	340
	225/60R16	98V		420 A A	7.8	6½J	228	676	750	300





# AX-88

## Ultra High Performance SUV

Wheel Diameter	SIZE	Index	PR	UTQG	Tread Depth (mm)	Rim	Width (mm)	OA.diameter (mm)	Max Loading Capacity	Max Permissive Pressure
16	195/55R16	87V	420	A A	7.6	6J	201	620	545	300
	205/45ZR16	87W	420	A A	7.6	7J	206	590	545	340
	205/50ZR16	87W	420	A A	7.6	6½J	214	612	545	300
	205/55R16	91V	420	A A	7.6	6½J	214	632	615	300
	205/55ZR16	91W	420	A A	7.6	6½J	214	632	615	300
	205/60R16	92V、H	420	A A	7.6	6J	209	652	630	300
	205/65R16	95H	420	A A	7.6	6J	209	672	690	300
	215/55ZR16	97W	420	A A	7.6	7J	226	642	730	340
	215/60R16	95H	420	A A	7.6	6½J	221	664	690	300
	225/50ZR16	92W	420	A A	7.6	7J	233	632	630	300
	225/55ZR16	99W	420	A A	7.6	7J	233	654	775	340
	225/60R16	98V	420	A A	7.6	6½J	228	676	750	300
	235/60R16	100H	420	A A	7.6	7J	240	688	800	300



# AX-88

Wheel Diameter	SIZE	Index	PR	UTQG	Tread Depth (mm)	Rim	Width (mm)	OA.diameter (mm)	Max Loading Capacity	Max Permissive Pressure
17	205/40ZR17	84W		420 A A	7.6	7½J	212	596	500	340
	205/45ZR17	88W		420 A A	7.6	7J	206	616	560	340
	205/50ZR17	93W		420 A A	7.6	6½J	214	638	650	340
	215/45ZR17	91W		420 A A	7.6	7J	213	626	615	340
	215/50ZR17	95W		420 A A	7.6	7J	226	648	690	340
	215/55ZR17	98W		420 A A	7.6	7J	226	668	750	340
	225/45ZR17	94W		420 A A	7.6	7½J	225	634	670	340
	225/50ZR17	98W		420 A A	7.6	7J	233	658	750	340
	225/55ZR17	101W		420 A A	7.6	7J	233	680	825	340
	235/45ZR17	97W		420 A A	7.6	8J	236	644	730	340
	235/50ZR17	100W		420 A A	7.6	7½J	245	668	800	340
	235/55ZR17	103W		420 A A	7.6	7½J	245	690	875	340
	245/40ZR17	95W		420 A A	7.6	8½J	248	628	690	340
	245/45ZR17	99W		420 A A	7.6	8J	243	652	775	340
	18	215/40ZR18	89W		420 A A	7.6	7½J	218	629	580
225/55ZR18		102W								
225/40ZR18		92W		420 A A	7.6	8J	230	637	630	340
225/45ZR18		95W		420 A A	7.6	7½J	225	659	690	340
235/40ZR18		95W		420 A A	7.6	8½J	241	645	690	340
235/45ZR18		98W		420 A A	7.6	8J	236	669	750	340

Wheel Diameter	SIZE	Index	PR	UTQG	Tread Depth (mm)	Rim	Width (mm)	OA.diameter (mm)	Max Loading Capacity	Max Permissive Pressure
18	235/50ZR18	101W		420 A A	7.6	7½J	245	693	825	340
	245/40ZR18	97W		420 A A	7.6	8½J	248	653	730	340
	245/45ZR18	100W		420 A A	7.6	8J	243	677	800	340
	255/35ZR18	94W		420 A A	7.8	9J	260	635	670	340
19	225/40ZR19	93W		420 A A	7.6	8J	230	663	650	340
	235/35ZR19	91W		420 A A	7.6	8½J	241	647	615	340
	235/40ZR19	96W		420 A A	7.6	8½J	241	671	710	340
	235/55ZR19	105W		420 A A	7.6	7½J	245	741	925	340
	245/45ZR19	102W		420 A A	7.6	8J	243	703	850	340
	245/55ZR19	107W		420 A A	7.6	7½J	253	753	975	340
20	225/30ZR20	85W		420 A A	7.6	8J	230	644	515	340
	225/35ZR20	93W		420 A A	7.6	8J	230	666	650	340
	235/35ZR20	92W		420 A A	7.6	8½J	241	672	630	340
	245/35ZR20	95W		420 A A	7.6	8½J	248	680	690	340
	245/40ZR20	99W		420 A A	7.6	8½J	248	704	775	340
	245/45ZR20	103W		420 A A	7.6	8J	243	728	875	340
	255/35ZR20	97W		420 A A	7.8	9J	260	686	730	340
	275/30ZR20	97W		420 A A	7.8	9½J	278	674	730	340
	275/40ZR20	106W		420 A A	7.8	9½J	278	728	950	340
	275/45R20	110V		420 A A	7.8	9J	273	756	1060	340
	285/50R20	112V		420 A A	8	9J	297	794	1120	300



# GoodTrip PCR

Smart performance, maximum value— deliver effective grip, durability, and reliability for everyday drives.

Goodtrip® Tires, our mission is to provide drivers with high-quality, affordable tires engineered for safety, comfort, and performance. Since 2002, we've been designing and producing a full range of tires for passenger cars, trucks, SUVs, and specialty vehicles.





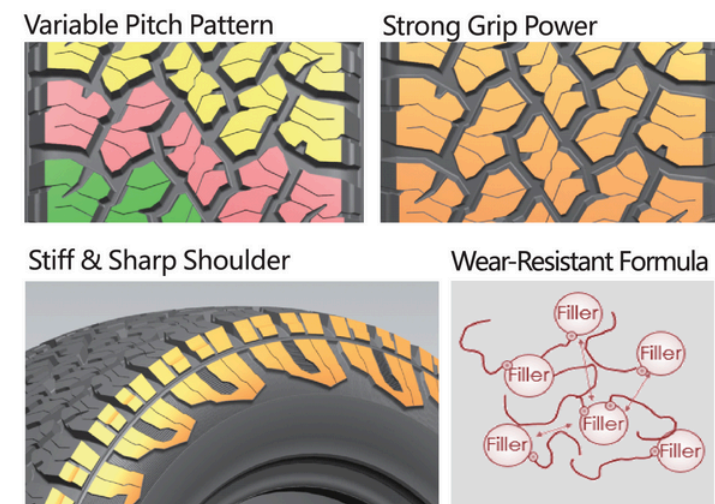
# GS-37 A/T



## Performance

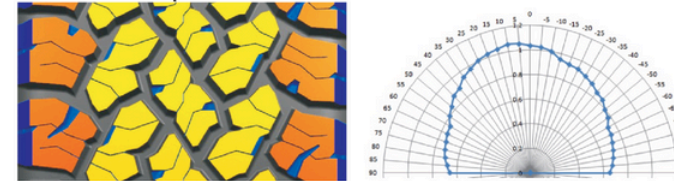


## Characteristics

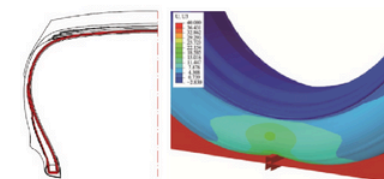


## Characteristics

Simulation Optimized Pattern



Reinforced Tire Structure



The reinforced tire structure and multi-layer matrix material work together to improve the tire strength and passing performance with computer simulation.

## GS-37 A/T

Size	Specification	PR	Load Index	Speed Rating	Reinforced	Standard Rim	Section Width (mm)	overall diameter (mm)	Maximum usage load				Max Pressure		UTQG
									Single		Dual		kPa	PS.I	
									kg	LBS	kg	LBS			
16	LT225/75R16	10PR	115/112	S	-	6J	223	750	1215	2680	1120	2470	550	80	-
	235/70R16	-	106	T	-	7J	240	736	950	2094	-	-	300	44	560 A B
	265/70R16	-	112	T	-	8J	272	778	1120	2469	-	-	300	44	560 A B
	275/70R16	-	114	S	-	8J	279	792	1180	2601	-	-	300	44	560 A B
17	LT245/75R17	10PR	121/118	S	-	7J	248	806	1450	3195	1320	2910	550	80	-
	265/65R17	-	112	S	-	8J	272	776	1120	2469	-	-	300	44	560 A B
	275/65R17	-	115	S	-	8J	279	790	1215	2679			300	44	560 A B
	285/65R17	-	116	S	-	8 1/2 J	292	802	1250	2756			300	44	560 A B
	LT285/70R17	10PR	121/118	Q	-	8 1/2 J	292	838	1450	3195	1320	2910	550	80	-
18	255/50R18	-	106	H	XL	8J	265	713	950	2094			340	49	560 A B
	265/40R18	-	101	H	XL	9 1/2 J	271	669	825	1819			340	49	560 A B
	LT275/65R18	10PR	123/120	S	-	8J	279	821	1550	3415	1400	3085	550	80	-
20	LT275/70R18	10PR	125/122	R	-	8J	279	849	1650	3640	1500	3305	550	80	-
22	275/55R20	-	117	H	XL	8 1/2 J	284	810	1285	2833	-	-	340	49	560 A B
22	285/45R22	-	114	H	XL	9 1/2 J	285	815	1180	2601	-	-	340	49	560 A B

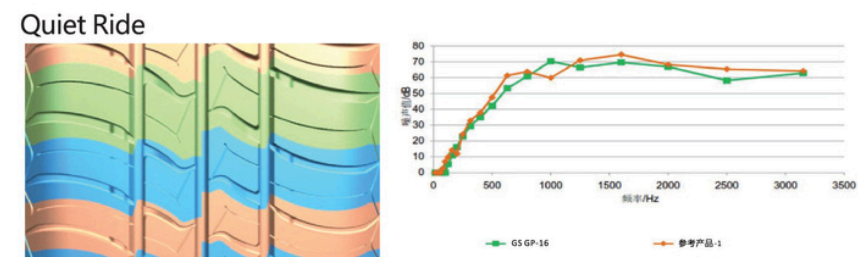
# GP-16



## Performance



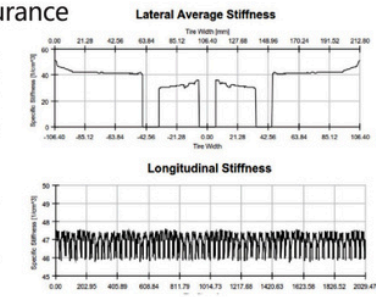
## Characteristics



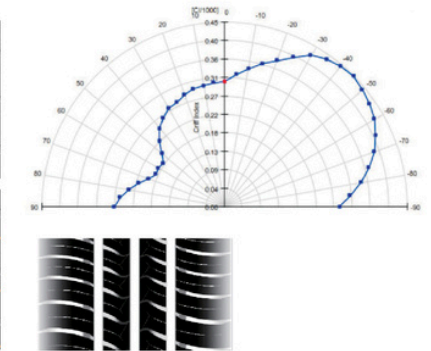
The multi-pitch frequency conversion pattern design, optimized by computer simulation, makes the sound energy disperse evenly to a wider frequency range, avoids the energy gathering in the frequency band which is easily perceived by the human ear. The advantage, driving quietly.

## Characteristics

### Cost-effective with Long Endurance



### Comfort and Safety



## GP-16

Size	Specification	Load Index	Speed Rating	Reinforced	Standard Rim	Section Width (mm)	overall diameter (mm)	Maximum usage load		Max Pressure		UTQG
								kg	LBS	kPa	P.S.I	
15	175/65R15	84	H	-	5 J	177	609	500	1102	300	44	560 A A
	185/55R15	82	V	-	6 J	194	585	475	1047	300	44	560 A A
	185/60R15	88	H	XL	5 1/2 J	189	603	560	1235	340	49	560 A A
	185/65R15	88	H	-	5 1/2 J	189	621	560	1235	300	44	560 A A
	195/50R15	82	V	-	6 J	201	577	475	1047	300	44	560 A A
	195/55R15	85	V	-	6 J	201	595	515	1135	300	44	560 A A
	195/60R15	88	V	-	6 J	201	615	560	1235	300	44	560 A A
	195/65R15	91	V	-	6 J	201	635	615	1356	300	44	560 A A
	205/60R15	91	V	-	6 J	209	627	615	1356	300	44	560 A A
	205/65R15	94	H	-	6 J	209	647	670	1477	300	44	560 A A
	205/70R15	96	H	-	6 J	209	669	710	1465	300	44	560 A A
	215/65R15	100	H	XL	6 1/2 J	221	661	800	1764	340	49	560 A A
215/70R15	98	T	-	6 1/2 J	221	683	750	1653	300	44	560 A A	

# GR-66

Size	Specification	Load Index	Speed Rating	Reinforced	Standard Rim	Section Width (mm)	overall diameter (mm)	Maximum usage load		Max Pressure		UTQG	
								kg	LBS	kPa	P.S.I		
16	195/55R16	87	V	-	6 J	201	620	545	1201	300	44	420 A A	
	205/45ZR16	87	W	XL	7 J	206	590	545	1201	340	49	420 A A	
	205/50ZR16	87	W	-	6 ½ J	214	612	545	1201	300	44	420 A A	
	205/55R16	91	V	-	6 ½ J	214	632	615	1356	300	44	420 A A	
	205/60R16	92	V	-	6 J	209	652	630	1389	300	44	420 A A	
	205/65R16	95	H	-	6 J	209	672	690	1521	300	44	420 A A	
	215/55ZR16	97	W	XL	7 J	226	642	730	1609	340	49	420 A A	
	215/60R16	95	H	-	6 ½ J	221	664	690	1521	300	44	420 A A	
	225/50ZR16	92	W	-	7 J	233	632	630	1389	300	44	420 A A	
	225/55ZR16	99	W	XL	7 J	233	654	775	1709	340	49	420 A A	
	225/60R16	98	V	-	6 ½ J	228	676	750	1653	300	44	420 A A	
	235/60R16	100	H	-	7 J	240	688	800	1764	300	44	420 A A	
	17	205/40ZR17	84	W	XL	7 ½ J	212	596	500	1102	340	49	420 A A
		205/45ZR17	88	W	XL	7 J	206	616	560	1235	340	49	420 A A
205/50ZR17		93	W	XL	6 ½ J	214	638	650	1433	340	49	420 A A	
215/45ZR17		91	W	XL	7 J	213	626	615	1356	340	49	420 A A	
215/50ZR17		95	W	XL	7 J	226	648	690	1521	340	49	420 A A	
215/55ZR17		98	W	XL	7 J	226	668	750	1653	340	49	420 A A	
225/45ZR17		94	W	XL	7 ½ J	225	634	670	1477	340	49	420 A A	
225/50ZR17		98	W	XL	7 J	233	658	750	1653	340	49	420 A A	
225/55ZR17		101	W	XL	7 J	233	680	825	1819	340	49	420 A A	
235/45ZR17		97	W	XL	8 J	236	644	730	1609	340	49	420 A A	
235/50ZR17		100	W	XL	7 ½ J	245	668	800	1764	340	49	420 A A	
235/55ZR17		103	W	XL	7 ½ J	245	690	875	1929	340	49	420 A A	
245/40ZR17		95	W	XL	8 ½ J	248	628	690	1521	340	49	420 A A	
245/45ZR17		99	W	XL	8 J	243	652	775	1709	340	49	420 A A	

18	215/40ZR18	89	W	XL	7 ½ J	218	629	580	1279	340	49	420 A A
	225/40ZR18	92	W	XL	8 J	230	637	630	1389	340	49	420 A A
	225/45ZR18	95	W	XL	7 ½ J	225	659	690	1521	340	49	420 A A
	235/40ZR18	95	W	XL	8 ½ J	241	645	690	1521	340	49	420 A A
	235/45ZR18	98	W	XL	8 J	236	669	750	1653	340	49	420 A A
	235/50ZR18	101	W	XL	7 ½ J	245	693	825	1819	340	49	420 A A
	245/40ZR18	97	W	XL	8 ½ J	248	653	730	1609	340	49	420 A A
	245/45ZR18	100	W	XL	8 J	243	677	800	1764	340	49	420 A A
19	255/35ZR18	94	W	XL	9 J	260	635	670	1477	340	49	420 A A
	225/40ZR19	93	W	XL	8 J	230	663	650	1433	340	49	420 A A
	235/35ZR19	91	W	XL	8 ½ J	241	647	615	1356	340	49	420 A A
	235/40ZR19	96	W	XL	8 ½ J	241	671	710	1565	340	49	420 A A
20	225/30ZR20	85	W	XL	8 J	230	644	515	1135	340	49	420 A A
	225/35ZR20	93	W	XL	8 J	230	666	650	1433	340	49	420 A A
	235/35ZR20	92	W	XL	8 ½ J	241	672	630	1389	340	49	420 A A
	245/35ZR20	95	W	XL	8 ½ J	248	680	690	1521	340	49	420 A A
	245/40ZR20	99	W	XL	8 ½ J	248	704	775	1709	340	49	420 A A
	245/45ZR20	103	W	XL	8 J	243	728	875	1929	340	49	420 A A
	255/35ZR20	97	W	XL	9 J	260	686	730	1609	340	49	420 A A
	275/30ZR20	97	W	XL	9 ½ J	278	674	730	1609	340	49	420 A A
	275/40ZR20	106	W	XL	9 ½ J	278	728	950	2094	340	49	420 A A
21	275/45R20	110	V	XL	9 J	273	756	1060	2337	340	49	420 A A
	285/50R20	112	V	-	9 J	297	794	1120	2469	300	44	420 A A

# GS-07 H/T

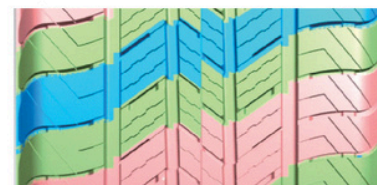


## Performance



## Characteristics

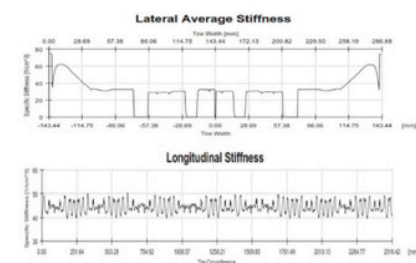
### Quiet and Comfort



Optimized variable pitch combination design reduces noise effectively and brings quiet driving experience.

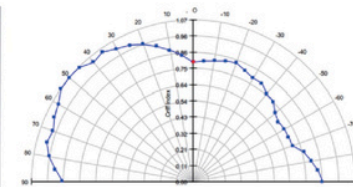


### Accurate Handling



## Characteristics

### Dry and Wet Ground Safety



- High density slots design and special formula shortens braking distance either in dry and wet condition.
- Unique durable tread formula ensures greater tread life, and provides excellent dry and wet braking performance, drive with confidence.
- Computer simulation analysis improves tire traction on both dry and wet ground.

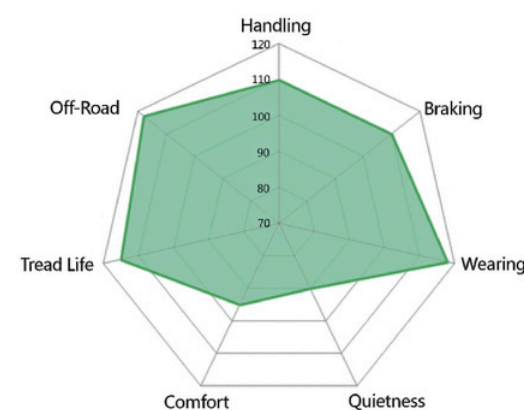
## GS-07 H/T

Size	Specification	Load Index	Speed Rating	Reinforced	Standard Rim	Section Width (mm)	overall diameter (mm)	Maximum usage load		Max Pressure		UTQG	
								kg	LBS	kPa	P.S.I		
15	235/75R15	109	T	XL	6 ½ J	235	733	1030	2271	340	49	480 A A	
	215/65R16	98	H	-	6 ½ J	221	686	750	1653	300	44	480 A A	
	215/70R16	100	H	-	6 ½ J	221	708	800	1764	300	44	480 A A	
	225/70R16	103	T	-	6 ½ J	228	722	875	1929	300	44	480 A A	
	235/65R16	107	H	XL	7 J	240	712	975	2149	340	49	480 A A	
	235/70R16	106	T	-	7 J	240	736	950	2094	300	44	480 A A	
	245/70R16	111	T	XL	7 J	248	750	1090	2403	340	49	480 A A	
	255/70R16	111	H	-	7 ½ J	260	764	1090	2403	300	44	480 A A	
16	265/70R16	112	T	-	8 J	272	778	1120	2469	300	44	480 A A	
	215/60R17	96	V	-	6 ½ J	221	690	710	1565	300	44	480 A A	
	225/60R17	99	V	-	6 ½ J	228	702	775	1709	300	44	480 A A	
	225/65R17	102	T	-	6 ½ J	228	724	850	1874	300	44	480 A A	
	235/60R17	102	H	-	7 J	240	714	850	1874	300	44	480 A A	
	235/65R17	108	H	XL	7 J	240	738	1000	2205	340	49	480 A A	
	245/65R17	107	H	-	7 J	248	750	975	2149	300	44	480 A A	
	245/70R17	110	H	-	7 J	248	776	1060	2337	300	44	480 A A	
17	265/70R17	115	T	-	8 J	272	804	1215	2679	300	44	480 A A	
	235/55R18	104	V	XL	7 ½ J	245	715	900	1984	340	49	480 A A	
	235/60R18	107	V	XL	7 J	240	739	975	2149	340	49	480 A A	
	255/55ZR18	109	W	XL	8 J	265	737	1030	2271	340	49	480 A A	
	265/60R18	110	H	-	8 J	272	775	1060	2337	300	44	480 A A	
	275/65R18	116	H	-	8 J	279	815	1250	2756	300	44	480 A A	
	18	275/55R20	117	H	XL	8 ½ J	284	810	1285	2833	340	49	480 A A
		275/60R20	115	T	-	8 J	279	838	1215	2679	300	44	480 A A

# GS-67 M/T

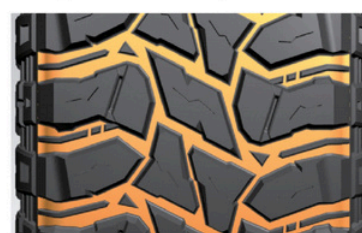


## Performance



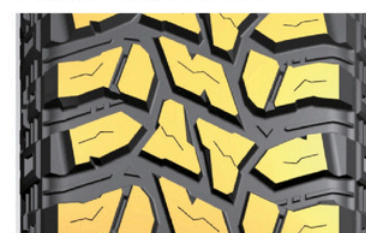
## Characteristics

Unique Groove Layout:



- Horizontally arranged grooves prevent splitting.
- Staggered tread formation adds sharp appearance and traction capabilities.
- Uniformed tread surface ensures maximum road contact and traction.

Durable Large Blocks:



- Large blocks for rough appearances
- Provide more contact points with the road surface for better handling, while minimizing noise.

## Characteristics

Unique Shoulder Tread Layout: Stone Ejectors:



Ply Reinforced Sidewall

Optimized 3 ply construction provides extra protection against impact, overall usage, and handling.



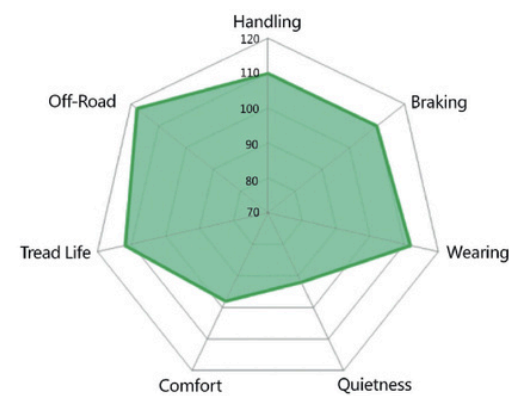
## GS-67 M/T

Size	Specification	PR	Load Index	Speed Rating	Reinforced	Mold pattern depth	Sidewall Style	Standard Rim	Section Width (mm)	overall diameter (mm)	Maximum usage load				Max Pressure		UTQG
											Single		Dual		kPa	P.S.I	
											kg	LBS	kg	LBS			
15	33X12.50R15LT	6PR	108	Q	-	15.5	BSW	10 J	318	832	1000	2205	-	-	250	35	-
	35X12.50R15LT	6PR	113	Q	-	15.5	BSW	10 J	318	883	1150	2535	-	-	250	35	-
17	LT285/70R17	10PR	121/118	Q	-	15.5	BSW	8 1/2 J	292	838	1450	3195	1320	2910	550	80	-
	33X12.50R17LT	10PR	120	Q	-	15.5	BSW	10 J	318	832	1400	3085	-	-	450	65	-
18	35X12.50R17LT	10PR	121	Q	-	15.5	BSW	10 J	318	883	1450	3195	-	-	450	65	-
	33X12.50R18LT	10PR	118	Q	-	15.5	BSW	10 J	318	832	1320	2910	-	-	450	65	-
20	35X12.50R18LT	10PR	123	Q	-	15.5	BSW	10 J	318	883	1550	3415	-	-	450	65	-
	LT285/55R20	10PR	122/119	Q	-	15.5	BSW	9 J	297	822	1500	3307	1360	2998	550	80	-
22	33X12.50R20LT	10PR	114	Q	-	15.5	BSW	10 J	318	832	1180	2600	-	-	450	65	-
	35X12.50R20LT	10PR	121	Q	-	15.5	BSW	10 J	318	883	1450	3195	-	-	450	65	-
	37X13.50R20LT	12PR	128	Q	-	15.5	BSW	11 J	345	934	1800	3970	-	-	550	80	-
24	33X12.50R22LT	12PR	114	Q	-	15.5	BSW	10 J	318	832	1180	2600	-	-	550	80	-
	35X12.50R22LT	12PR	121	Q	-	15.5	BSW	10 J	318	883	1450	3195	-	-	550	80	-
	37X13.50R22LT	12PR	128	Q	-	15.5	BSW	11 J	345	934	1800	3970	-	-	550	80	-
24	35X12.50R24LT	10PR	111	Q	-	15.5	BSW	10 J	318	883	1090	2405	-	-	550	80	-
	37X13.50R24LT	12PR	124	Q	-	15.5	BSW	11 J	345	934	1600	3525	-	-	550	80	-

# GS-57 R/T



## Performance



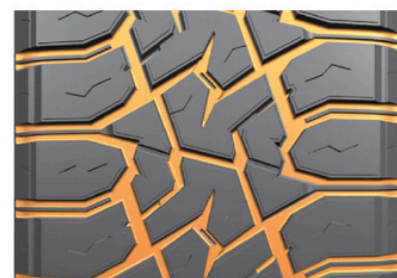
## Characteristics

Aggressive Open-shoulder Arrangement



Optimized 3 ply construction provides extra protection against impact, overall usage,

Gripping Power



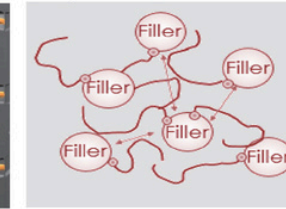
Tread grooves arranged for better traction and handling under severe road conditions.

## Characteristics

Stone Ejectors



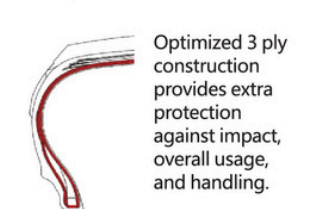
Unique Tear-resistant Formula



Rigid and Protected Sidewall



3 Ply Reinforced Sidewall



Optimized 3 ply construction provides extra protection against impact, overall usage, and handling.

## GS-57 R/T

Size	Specification	PR	Load Index	Speed Rating	Reinforced	Mold pattern depth	Sidewall Style	Standard Rim	Section Width (mm)	overall diameter (mm)	Maximum usage load				Max Pressure		UTQG
											Single		Dual		kPa	PS.I	
											kg	LBS	kg	LBS			
17	33X12.50R17LT	10PR	120	Q	-	13.5	BSW	10 J	318	832	1400	3085	-	-	450	65	-
	35X12.50R17LT	10PR	121	Q	-	13.5	BSW	10 J	318	883	1450	3195	-	-	450	65	-
18	33X12.50R18LT	10PR	118	Q	-	13.5	BSW	10 J	318	832	1320	2910	-	-	450	65	-
	35X12.50R18LT	10PR	123	Q	-	13.5	BSW	10 J	318	883	1550	3415	-	-	450	65	-
20	LT285/55R20	10PR	122/119	Q	-	13.5	BSW	9 J	297	822	1500	3305	1360	3000	550	80	-
	33X12.50R20LT	10PR	114	Q	-	13.5	BSW	10 J	318	832	1180	2600	-	-	450	65	-
22	35X12.50R20LT	10PR	121	Q	-	13.5	BSW	10 J	318	883	1450	3195	-	-	450	65	-
	33X12.50R22LT	10PR	109	Q	-	13.5	BSW	10 J	318	832	1030	2270	-	-	450	65	-
22	35X12.50R22LT	10PR	117	Q	-	13.5	BSW	10 J	318	883	1285	2835	-	-	450	65	-

# GX-01



## Performance



## Characteristics

### Superior Dynamic Performance



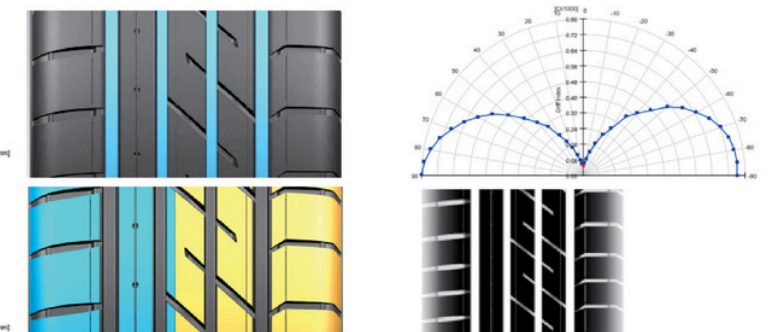
- Pulse type design:
- Dynamic appearance, while providing more excellent drainage and prevent aquaplaning;
- Wide patterned blocks with wide pattern grooves, sharp appearance with sporty

## Characteristics

### Excellent Handling



### Driving Safety



## GX-01

Size	Specification	Load Index	Speed Rating	Reinforced	Standard Rim	Section Width (mm)	overall diameter (mm)	Maximum usage load		Max Pressure		UTQG
								kg	LBS	kPa	PSI	
20	265/50R20	111	V	XL	8 1/2 J	277	774	1090	2403	340	49	420 A A
	235/30ZR22	90	W	XL	8 1/2 J	241	701	600	1323	340	49	420 A A
	245/30ZR22	92	W	XL	8 1/2 J	248	707	630	1389	340	49	420 A A
	255/30ZR22	95	Y	XL	9 J	260	713	690	1521	340	49	420 A A
	265/35R22	102	V	XL	9 1/2 J	271	745	850	1874	340	49	420 A A
	265/40R22	106	V	XL	9 1/2 J	271	771	950	2094	340	49	420 A A
22	305/40R22	114	V	XL	11 J	313	803	1180	2601	340	49	420 A A
	305/45R22	118	V	XL	10 J	303	833	1320	2910	340	49	420 A A
	255/30ZR24	97	W	XL	9 J	260	764	730	1609	340	49	420 A A
	275/25ZR24	96	W	XL	10 J	283	748	710	1565	340	49	420 A A
	275/30ZR24	101	W	XL	9 1/2 J	278	776	825	1819	340	49	420 A A
24	295/35R24	110	V	XL	10 1/2 J	301	816	1060	2337	340	49	420 A A
	305/35R24	112	V	XL	11 J	313	824	1120	2469	340	49	420 A A
	305/30ZR26	109	W	XL	11 J	313	844	1030	2271	340	49	420 A A



# Atlander TBR

Strength and efficiency combined—  
designed to conquer heavy loads and  
long roads with confidence.







# ATL430

Line-Haul Drive

Black  
represents  
tire position



## Tire Performance

- Deep tread design provides long tire life and redesigned contact points promote even wear
- Redesigned block shape, formation for effective traction and generates less heat
- Better fuel efficiency for continuous line-haul operations
- V-shaped grooves provide comfortable driving experience, and reduce fatigue



SIZE	PR	STANDARD RIM	LOAD INDEX	SPEED RATING	OUT SIZE OF INFLATION OF NEW TIRE		MAX LOAD		PRESSURE COLD (PSI)	TREAD DEPTH (32")
					SECTION WIDTH (IN)	OVERALL DIAMETER (IN)	SINGLE (LBS)	DUAL (LBS)		
11R22.5	14	8.25	144/142	K	11	41	6175	5840	105	28
11R22.5	16	8.25	146/143	K	11	42	6810	6005	120	28
11R24.5	16	8.25	149/148	K	11	44	7160	6610	120	28
285/75R24.5	16	8.25	147/144	K	11	42	6780	6175	120	28
295/75R22.5	14	9.00	144/141	K	12	40	6175	5675	110	28
295/75R22.5	16	9.00	146/143	K	12	40	6610	6005	120	28

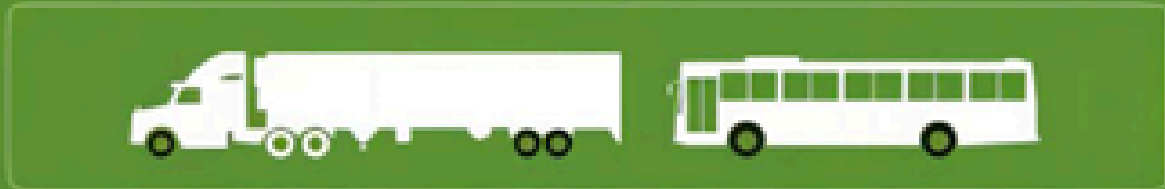




# ATL858

Regional HWY/All-Position

Black  
represents  
tire position



## Tire Performance

- Improved tread pattern minimizes generating of heat
- Increased durability due to wide tread surface and rubber compound
- Deep tread depth delivers extended usage, and lowering cost per mile
- Reinforced shoulders fight irregular wear



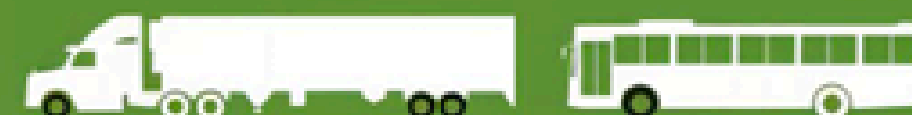
SIZE	PR	STANDARD RIM	LOAD INDEX	SPEED RATING	OUT SIZE OF INFLATION OF NEW TIRE		MAX LOAD		PRESSURE COLD (PSI)	TREAD DEPTH (32")
					SECTION WIDTH (IN)	OVERALL DIAMETER (IN)	SINGLE (LBS)	DUAL (LBS)		
11R22.5	14	8.25	144/142	M	11	41	6175	5840	105	18
11R22.5	16	8.25	146/143	M	11	41	6610	6005	120	18
11R24.5	16	8.25	149/146	M	11	43	7160	6610	120	19
12R22.5	18	9.00	152/149	M	12	43	7830	7160	135	21
285/75R24.5	14	8.25	144/141	M	11	41	6175	5675	110	18
295/75R22.5	14	9.00	144/141	M	12	40	6175	5675	110	19
315/60R22.5	18	9.00	154/151	M	12	42	8270	7610	120	21
315/60R22.5	20	9.00	161/154	J	12	42	10200	8270	130	21



# ATL210

Line-Haul Premium Steering

Black  
represents  
tire position



## Tire Performance

- Reduces force pull in shoulder and bead areas, better fuel efficiency
- Optimized contact points to minimize uneven wear
- Long and extended driving mileage
- Spin monitored to minimize out of round or unbalanceable issues



SIZE	PR	STANDARD RIM	LOAD INDEX	SPEED RATING	OUT SIZE OF INFLATION OF NEW TIRE		MAX LOAD		PRESSURE COLD (PSI)	TREAD DEPTH (32")
					SECTION WIDTH (IN)	OVERALL DIAMETER (IN)	SINGLE (LBS)	DUAL (LBS)		
11R22.5	14	8.25	144/142	M	11	41	6175	5840	105	18
11R24.5	14	8.25	146/143	M	11	43	6610	6005	105	18
11R24.5	16	8.25	149/146	M	11	43	7160	6610	120	18
285/75R24.5	14	8.25	144/141	M	11	41	6175	5675	110	19
285/75R24.5	16	8.25	147/144	M	11	41	6760	6175	120	19
295/75R22.5	14	9.00	144/141	M	12	40	6175	5675	110	19
295/75R22.5	16	9.00	146/143	M	12	40	6610	6005	120	19



# Contact



[info@unitedtire-inc.com](mailto:info@unitedtire-inc.com)



[www.unitedtire-inc.com](http://www.unitedtire-inc.com)



(626) 522-0121

